



SCHOOL OF
ADVANCED STUDY
UNIVERSITY
OF LONDON

2025

Postgraduate programmes in

Digital Humanities

sas.ac.uk/digital-humanities

World class. Worldwide.

Join the World Class



1 Quality of learning
Learn from leading specialists in the field of Digital Humanities, both within the School of Advanced Study and our eight Institutes.

2 World-class resources
Enjoy access to a huge range of well-established digital resources and services, including those being developed by Senate House Library.

3 An enriching scholarly environment
Join our lively programme of events, conferences and seminars throughout the academic year.

4 An intellectual hub
Study in Bloomsbury, the intellectual heart of London, where you will have easy access to world-class libraries and facilities, including Senate House Library, the British Library and the British Museum.

5 Join the World Class
Graduates of our programmes are awarded a University of London degree, an internationally recognised mark of quality.

A background image showing a row of graduates in academic regalia, including black mortarboards and red and blue gowns, looking towards the right. The image is slightly blurred, focusing on the foreground graduates.

Contents

Postgraduate programmes in Digital Humanities

Join the World Class	2
The School of Advanced Study	4
Why study with us?	5
MPhil/PhD in Digital Humanities	6
MPhil/PhD in Digital Humanities by Practice	7
Supervisors: areas of interest	8
Entry requirements	9
Further information	10

The School of Advanced Study



The School of Advanced Study, University of London, is a unique institution in UK higher education.

Comprising eight internationally renowned research Institutes and specialist hubs for digital humanities and public engagement, it is located within the Bloomsbury precinct of the University in the intellectual heart of London.

Founded in 1994, the School of Advanced Study is the only institution in the UK that is nationally funded to promote and facilitate research in the humanities. It performs a vital role as a driving force for knowledge sharing across the humanities in the UK and beyond, and receives special funding for this

purpose from Research England. The School works in collaboration with other organisations (notably the Arts and Humanities Research Council and the British Academy) other UK universities, independent research organisations, learned societies and government agencies.

The eight Institutes of the School, many of which have long and distinguished histories of their own, are dedicated to serving the research communities of their disciplines, both nationally and internationally. Together they complement the work of others by offering a broad research base and providing a range of services that far exceed the capacity of any one individual university to support, inspire and advance research

activity. The School also enhances the dissemination of that research beyond that which an individual or their institution could achieve alone.

Underpinning the School's national role is the research and scholarship undertaken by its academic staff. The process of undertaking challenging research in order to extend the boundaries of knowledge across disciplines and in collaboration with researchers from around the world is critical to the School's function as an innovative space for advanced study and its commitment to the highest standards of scholarship.

Why study with us?

World-class resources

As a student of the School of Advanced Study you will have access to our huge range of well-established digital resources and services, including a number of online databases, directories, bibliographies, catalogues and collections.

The School is also home to the renowned Senate House Library, a literary landmark in the heart of London. Senate House Library is developing digital initiatives, especially through the appointment of a Head of Commercial Licensing and Digitisation. There is also a digital humanities strand at the annual Being Human Festival.

More broadly, the School of Advanced Study itself offers excellent resources for interdisciplinary research by bringing together eight internationally renowned research Institutes that support the promotion of research in the humanities.

Students will have access to a range of resources to support their degree, including research software, expert technical advice, and connections to national and international scholarly and professional organisations. They will also have opportunities to use the Senate House MakerSpace, which provides facilities for 3D imaging and printing, digitisation, and computational experimentation.

A scholarly community

The School of Advanced Study offers a rich, collaborative, interdisciplinary research environment. Each year we host a broad range of events, seminars and conferences that we encourage our research students to engage with.

Our students can also take advantage of a varied and challenging research training programme, with general research skills training and research methodologies courses provided through the School and subject-specific training provided within the Institutes.

Be at the heart of a global city

The School is located in the heart of Bloomsbury in central London. Our location ensures that you will be able to enjoy everything the city has to offer, from the world-class resources of neighbouring institutions, such as the British Museum and the British Library, to shops, restaurants, parks, clubs and theatres.

London is regularly named the best university city in the world for its welcoming attitude, diversity and vibrant, student-friendly culture.



Daniela Major

Portugal

‘One of the best parts of the programme was the support I received from my supervisors and the research and teaching staff. Without them, without the avid exchange of ideas and help I received, my project would not have got as far as it did. The programme has furnished me with many skills, from interpersonal to technical, that would be very useful in academia, industry or in the public sector.’

MPhil/PhD in Digital Humanities

Digital Humanities is a fundamentally interdisciplinary subject area that brings a range of computational, quantitative and other innovative and collaborative methods to the study of texts, images, histories, languages and cultures, while also being critical about methodology, disciplinarity and pedagogy.

About the degree

Undertaking doctoral research gives you the opportunity to gain expertise in your area of interest while also honing a range of transferable skills. On completion of your research, you'll be well prepared for specialist career paths both within academia and in other scholarly professions. Graduates are awarded a University of London degree.

The School of Advanced Study provides first-class PhD supervision and guidance from academics who are leaders in their field.

Recent digital research in the School has focused on:

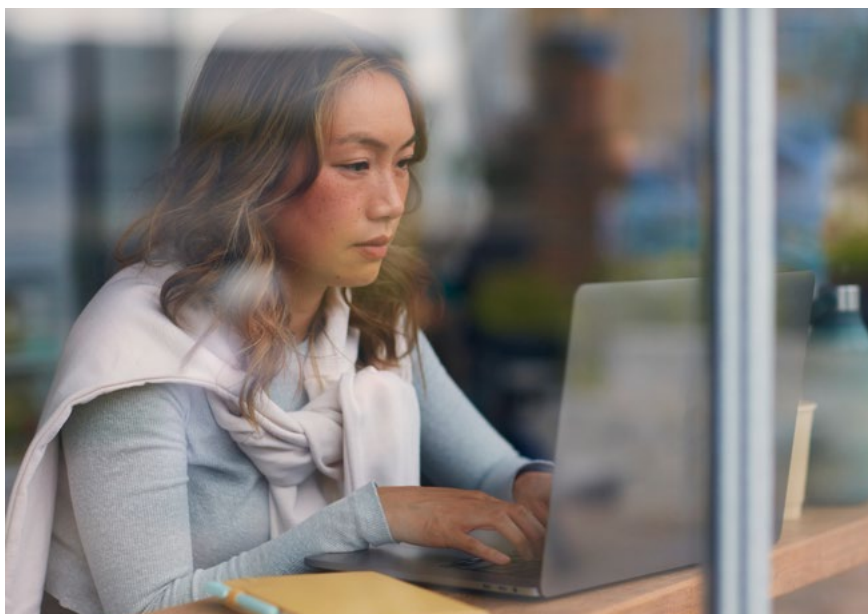
- Humanities approaches to the archived web
- Cultural and historical perspectives on social media
- Digital literature and digital scholarly editing
- Digital cultural heritage
- Multilingual approaches to digital research.

Programme structure

The degree can be taken full time over three years (or a maximum of four) or part time over six years (or a maximum of seven). You will initially be registered for our MPhil and, providing your progress has been satisfactory, will then be upgraded to our PhD programme.

After submission of the thesis, you will attend an oral examination (viva) conducted by an internal examiner from the University of London, and an external examiner, normally from another British university.

The primary activity of the PhD programme is writing a thesis of up to 100,000 words. You are also encouraged to participate in the regular seminars held at the School during the academic year.



MPhil/PhD in Digital Humanities by Practice



In addition to our PhD in Digital Humanities, in 2024 we introduced a new Digital Humanities by Practice PhD. While both programmes involve extensive independent research and the development of critical, technical and creative skills, the introduction of the PhD by Practice allows for greater flexibility for those interested in pursuing more intensive practice-based research.

About the degree

The PhD by Practice offers a distinctive opportunity to conduct doctoral research by developing a body of creative work coupled with a written critical component. Unlike a traditional PhD, this programme allows students to be assessed on the creative output of their research in addition to a shorter written thesis.

For example, a student could produce an exhibition (physical or virtual), digital prototype(s) or demonstrator(s), a body of code, a database, data visualisations, or an art installation.

Programme structure

The degree can be taken full time over three years (or a maximum of four) or part time over six years (or a maximum of seven). You will initially be registered for our MPhil and, providing your progress has been satisfactory, will then be upgraded to our PhD programme.

After submission of the thesis, you will attend an oral examination (viva) conducted by an internal examiner from the University of London, and an external examiner, normally from another British university.

The primary activity of the PhD programme is working on a creative digital project accompanied by a written thesis of up to 30,000 words.

Programmes via distance learning

The School of Advanced Study offers students with an appropriate topic and level of local resource the opportunity to undertake a PhD by distance learning. If you choose to study as a distance learner, you will be required to attend our London campus at set intervals to complete an intensive research training module, for upgrade and for the viva, but will otherwise study at your own location.

This option is available to UK and international students on the same basis as our on-campus PhD programmes (three/four years full time, six/seven years part time). Fees are the same as for our on-campus PhD programmes.

Supervisors: areas of interest

Professor Jane Winters

Professor of Digital Humanities,
School of Advanced Study
Email: jane.winters@sas.ac.uk

- Born-digital archives, particularly web archives
- Digital cultural heritage
- Digital publishing and open access
- The impact of digital humanities on humanities research (especially in history)
- Peer review and methods of evaluation in the digital environment

Dr Gabriel Bodard

Reader in Digital Classics,
Institute of Classical Studies
Email: gabriel.bodard@sas.ac.uk

- Digital editions of ancient texts or corpora (especially epigraphy and papyrology)
- The application of digital humanities and computational methods to studying, teaching and learning ancient Greek or Latin
- Linked Open Data and the study of structured data about the ancient world
- The history of digital scholarship in classics or archaeology

Dr Christopher Ohge

Senior Lecturer in Digital Approaches to Literature,
Institute of English Studies
Email: christopher.ohge@sas.ac.uk

- Digital approaches to literature and criticism
- Scholarly editing
- Textual studies
- Book history
- Text analysis
- Digital publishing

Dr Naomi Wells

Senior Lecturer in Italian and Spanish with Digital Humanities, Institute of Languages, Cultures and Societies
Email: naomi.wells@sas.ac.uk

- Social media and internet research
- Born-digital cultural heritage
- Migration and diasporic digital cultures
- Digital research in relation to other linguistic and cultural contexts, and in particular research that addresses multilingualism in the Digital Humanities

Dr Kaspar Beelen

Technical Lead, Digital Humanities
Email: kaspar.beelen@sas.ac.uk

- Humanities research and machine learning
- Computational methods for digital history and political text
- Bias and the politics of big (historical) data
- Large Language Models in historical research and the GLAM sector.



Entry requirements



Applicants to our research programmes are usually required to hold a master's degree.

However, we will consider applications from candidates who do not meet the formal academic requirements but who offer alternative qualifications and/or relevant experience.

English is the language of instruction and you will be required to demonstrate an appropriate level of proficiency.

For more information on entry requirements, visit:
bit.ly/SAS_entry-reqs

Applications

Before submitting an application, you are advised to contact a member of the academic staff who has

interests in your proposed field of study to discuss your proposal. Occasionally the School will also agree to support your research interest even though it is not listed.

Before agreeing to accept you, the School of Advanced Study will require you to submit a research proposal, so it is worthwhile having this drafted ahead of a formal application.

Candidates will normally receive an initial response to their application within 28 working days. Those who have been formally interviewed will normally be informed within one week as to whether they are to be offered a place.

All applications are made online. For more information visit:
bit.ly/SAS_how-to-apply

Digital Humanities Research Hub

The Digital Humanities Research Hub supports the mission of the School of Advanced Study to promote and facilitate digitally-enabled research across the disciplines. We do so by encouraging the use of digital techniques within humanities scholarship in the UK and by providing infrastructure and support for the digital humanities community, both nationally and internationally.

The multidisciplinary core team of the Hub includes academics with strong connections to subject areas including Classics, English, History and Modern Languages, as well as developers and researchers from technical backgrounds.

Further information



Fees

For up-to-date fees and funding opportunities, visit:

sas.ac.uk/funding

Please note, fees are subject to annual uplift.

Funding opportunities

Our students fund their studies in a variety of ways including scholarships, bursaries and fellowships, as well as government loans and postgraduate loans.

Studentships for PhD research in the Digital Humanities Research Hub are currently only available through the London Arts and Humanities Partnership (LAHP): **bit.ly/LAHP-OpenScholar**

The University of London reserves the right to alter or withdraw courses and amend other details without prior notice. For up-to-date fees and funding opportunities, please visit: **sas.ac.uk/funding**

Accommodation

Full-time students and part-time students with disabilities may apply for accommodation in one of the University of London's award-winning intercollegiate Halls of Residence. Our Registry office will send you housing information after you have been offered a place.

To learn more about accommodation options, please visit: **halls.london.ac.uk/our-accommodation**



The information contained in this prospectus was correct at the date of publication but may be subject to change. The University does not intend by publication or distribution of this prospectus to create any contractual or other legal relation with applicants, registered students, their advisers or any other persons. For the most up-to-date information, please visit our website.

Published by University of London.

Copyright © University of London, November 2024.

For further information on the range of programmes we offer,
please visit our website (sas.ac.uk) or contact us at:

University of London
Senate House, Malet Street
London WC1E 7HU
United Kingdom

Telephone enquires: +44 (0)20 7862 8360

Online enquires: london.ac.uk/enquiries



View the
Digital
Humanities
programme
web page

This material is available in alternative formats upon request.
Please contact: special.arrangements@london.ac.uk

Follow us on:



sas.ac.uk/facebook



sas.ac.uk/instagram



sas.ac.uk/issuu



sas.ac.uk/linkedin



sas.ac.uk/x



sas.ac.uk/youtube

sas.ac.uk/digital-humanities